



# Croeso i Ysgol Bodhyfryd



## Our Vision & Values

*Together, our aim is to create a happy and safe community where our culture and language are cherished.*

*The values that are important to us:*

### Respect

Everyone in the school is unique – learners and families, staff and stakeholders. As a school, we respect everyone's opinions and feelings.

### Wales and Welshness

We celebrate the language and culture of Wales in all aspects of our work.

### A welcoming and modern community

We play a full part in the life of our community and the community plays a full part in the life of Ysgol Bodhyfryd. We celebrate and protect our habitat. Working with the community, we will create a bright future for our pupils.

### Happiness

The ethos of each class and the learning experiences inspire our learners. We ensure that each learner enjoys the experiences and develops motivation whilst learning. The pupils look forward to coming to school to learn.

### Enterprise

We support each other in the school, as learners and staff, to venture with confidence, to think creatively and break new ground, and to learn from our successes and failures.

### Support and collaborate

Within our classes, our school and across our school cluster, we collaborate and support each other to continually develop and learn.

## An Inclusive Community

As a school we ensure that the needs of all learners are met through high quality teaching and learning provision. Our Universal Provision includes: whole class teaching, effective differentiation, collaborative group work and interventions. The school will also work with parents or carers to ensure that each child has the necessary help to progress.



We offer opportunities for everyone to succeed according to their ability, and by following their interests within each class. We meet the learning needs of everyone. We celebrate the differences that exist between us.

We identify and plan for more able and talented individuals, and identify and support children who have additional learning needs.

Within the school, there is provision for Additional Learning Needs, Y Berllan for 3-7 year old pupils and the KS2 Unit for 7-11 year old pupils.

We also collaborate with a variety of agencies to support: speech and language, mental health and well-being, behaviour, parenting, counselling, attendance, support to parents with reading to children.

Health and Well-being is a focus and a high priority across all our work in Ysgol Bodhyfryd. All learners can access our specialist interventions such as ELSA, SAP, friendship groups and outdoor learning experiences to enrich their learning.

## High expectations

The new curriculum is a unique learning journey for everyone. There will be times when we move forward swiftly, and sometimes more gradually to ensure that they understand the subject. Progress is not always linked to age. They will move forward as:

- their knowledge increases;
- their understanding of subjects deepens;
- their communication skills grow;
- their skills improve.

## Assessment

Making progress is not always linked to the pupil's age. It will not happen in the same way for everyone. They will make progress as their knowledge increases, their understanding deepens, their communication skills grow and as their skills improve.

## Progression Steps

There are 5 progression steps within the Curriculum. The principles of progression are the foundation to our planning for learner progression across the areas over time.

## The progression steps are:

- Increasing breadth and depth of knowledge.
- Deepening understanding of the ideas and disciplines within Areas.
- Refinement and growing sophistication in the use and application of skills.
- Making connections and transferring learning into new contexts.
- Increasing effectiveness.

## The school will deliver the purposes of curriculum assessment:

- Supporting individual learners on an ongoing, day-to-day basis
- Reflecting on individual learner progress over time
- Understanding group progress in order to reflect on practice (making use of national and standardised tests)

## Celebrating success

As a school, we believe that celebrating our success is essential. Ensuring that the pupils and the community take pride in the school's achievements is crucial.

## Dynamic and innovative

Being enterprising leads to growing confidence and learning. The ethos of enterprise and creativity and perseverance provides a foundation for our children and educators. We are a learning organisation and we welcome experimentation with modern methods, based on the latest research.

## The voice of the child

The voice of the pupil is all-important in Ysgol Bodhyfryd and we will ensure that the curriculum draws on the voice of our learners and responds to their needs, their experiences, and their input into their learning. Our staff will plan valid learning experiences that are challenging and motivate the individual needs and contexts of all the children in our school.

Educational visits are important to us in order to ignite interests and stimulate enthusiasm. With the pupils, we will plan a creative, interesting, challenging and varied curriculum that follows pupils' interests and instils confidence to respond positively to challenges.



## Creative learners

We will plan learning experiences across the areas of learning and experience that incorporate the cross-curricular skills, namely literacy, numeracy and digital competency, by enabling learners to develop, practice and fully apply the skills, and have opportunities to apply their knowledge through real experiences that are practical and creative. The opportunities for outdoor learning are very important to our pupils.

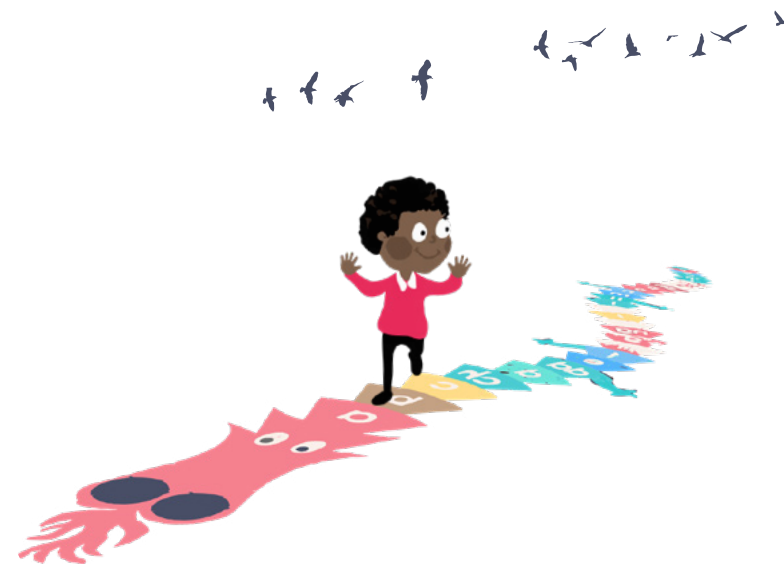
## Respect

Discussing healthy relationships and having the freedom to be ourselves and belonging are an integral part of our values. We welcome all members of our community to the school, whatever their beliefs, race, language, background and sexuality.

## Religion, Values and Ethics

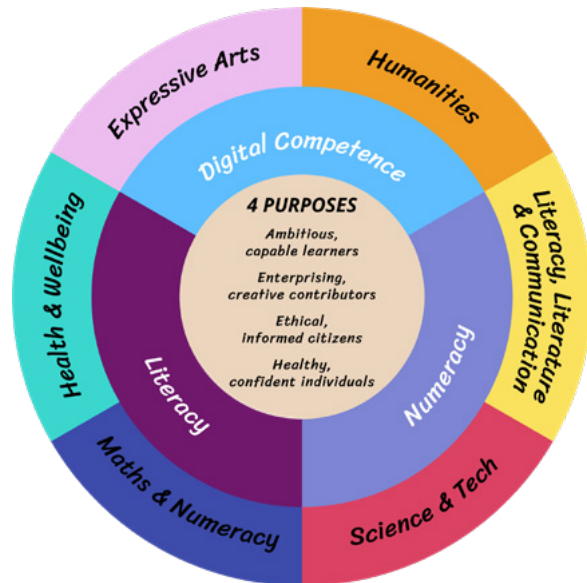
Learners at Ysgol Bodhyfryd are given opportunities to examine all the concepts of religious values and ethics, and they will examine the importance of the relationship of religious beliefs and ethics on other aspects of life, society and the world. Religious beliefs and ethics within the curriculum do not involve making learners religious or non-believers; educating them motivates them to be open, impartial and to respect others.

Our provision is inclusive and reflects diversity, our learning develops awareness and understanding of various viewpoints and values and a variety of relationships. We will also learn about how to deal with peer pressure.



# Our curriculum

*The Curriculum is everything that we teach and do in the school to enable pupils to grow into happy citizens that help others. We offer a wide-ranging curriculum that provides our pupils with a range of real-life experiences*



## Why is a new curriculum needed?

In order to create an environment where the pupils learn to live and live to learn in a world that is continually changing.

- The world is changing. There are many new challenges that will require new technology and new ideas.
- Your child needs knowledge, skills and experiences in order to succeed. Your child's school curriculum will help with these.
- The curriculum is not only related to what pupils learn. It also involves how they learn and the reasons why they learn.

## What is important?

It is important that lessons develop creativity, and include real life meaning, offering an opportunity to reflect and think about what has been learnt and then move forward to teach other topics linked to the wider world. The curriculum relates to connected learning. In addition to teaching literacy, numeracy and digital skills there are six areas of learning and experience.

During the pupils' time at Ysgol Bodhyfryd we will develop the skills and concepts that are incorporated in the 27 statements of what matters in the areas of learning and experience. As we revisit these, we will extend and deepen these skills and concepts in order to ensure progression in the learning that is appropriate to our learners' developmental steps.

## The 12 Pedagogical principles

1. Focus on delivering the four purposes.
2. Challenge the learners and emphasise the importance of sustained effort. Convey high but achievable expectations.
3. Use a range of teaching methods.
4. Develop problem solving skills, creative skills and the ability to think creatively.
5. Build on previous knowledge and experience and engage interest.
6. Create authentic contexts.
7. Employ formative assessment principles.
8. Extend within and across the Areas of Learning.
9. Reinforce and practice the cross-curricular skills of literacy, numeracy and digital competence.
10. Develop learners to take increasing responsibility for their own learning. Develop as independent learners.
11. Promote social and emotional development and positive relationships.
12. Encourage collaboration.



## What is the curriculum?

### The 4 purposes

The four purposes underpin the curriculum and they form the foundation to all the pupils' learning. Each child and young person will receive support to become:

- **Ambitious, capable learners**, who use all their skills to seek challenges to be resolved and enjoyed, who are effective, bilingual communicators and are ready to learn throughout their lives.
- **Enterprising, creative and critical contributors** to the creation of ideas and products, who are increasingly confident to express emotions through different media and who are ready to play a full part in life and work.
- **Principled, informed citizens** who are aware of their identity, culture and place in society and the wider world, respecting the needs and rights of other people and the planet.
- **Healthy, confident individuals**, who nurture their mental and emotional well-being by developing confidence, resilience, skills and empathy to live as fulfilling lives as possible, who possess spiritual and ethical values and the ability to make measured decisions about their lifestyle and how to keep safe.

### 6 areas of learning

The new curriculum involves connected learning. In addition to the skills of literacy, numeracy and digital competence, there will be six areas of learning and experience (AoLE). Your children might not receive lessons under these titles, but all their learning will be linked to these areas.

- **Expressive Arts.** Examine the arts in order to learn how to use their knowledge, skills and imagination to create. Learn to appreciate the arts and to reflect on their own work.
- **Humanities.** Examine history, geography, politics, religions, business, cultures and societies in Wales and worldwide.
- **Science and Technology.** Understand the importance of science and technology. Learn about design and engineering, living things, matter, powers and energy, and how computers work.
- **Mathematics and Numeracy.** Understand numbers. Use mathematical symbols. Examine shapes and measures. Learn about statistics and probability.
- **Health and Well-Being.** Learn about healthy eating and healthy relationships. Learn about making good decisions and dealing with influences. Learn about how to care for their mental health and emotional well-being.
- **Languages, Literacy and Communication.** Learn about languages. Understand and use Welsh, English and other international languages. Understand and create literature.

## How do we teach?

Teachers are the facilitators of the learning. While considering the needs, perspectives and progression of the learners, they will design fun, challenging and innovative experiences. Learners will have opportunities to influence their learning. Teaching staff, as the experts, will guide the learning in an appropriate direction, in line with the learners' perspectives, ideas, experiences and interests. The learners will influence the design of the learning environment. They will have opportunities to work in ways that enrich their learning and to present their work in their own personal and unique ways. There will be many opportunities to enquire further within a safe environment.

### The integral skills and cross-curricular themes will merge:

#### Integral Skills:

Planning and organizing, creativity and innovation, personal effectiveness, critical thinking and problem solving.

#### Cross-curricular Themes

Local, National and International Contexts, Relationships and Sexuality Education, Human Rights Education and the United Nations Convention on the Rights of the Child, Diversity, Careers and work-related experiences.

### Mandatory Concepts and elements

The Curriculum and Assessment (Wales) Act 2021 notes the following mandatory elements that, with the exception of English, span the 3 to 16 learning continuum. In designing our curriculum, we will consider how to include these mandatory elements:

- The cross-curricular skills of literacy, numeracy and digital competence
- The names of the areas of learning and experience (Areas)
- Relationships and sexuality education
- Religion, values and ethics
- Welsh and English

### Statutory Aspects

We have also considered the following statutory aspects that are within the Curriculum for Wales Framework when designing our curriculum:

- Careers and work-related experiences
- Well-being of Future Generations (Wales) Act 2015
- United Nations Convention on the Rights of the Child (UNCRC)
- United Nations Convention on the Rights of Persons with Disabilities (UNCRPD)
- Additional Learning Needs and Education Tribunal (Wales) Act 2018

## Our family



### PTA

The parent-teacher association is crucial in providing support to the school in raising funds to develop the school and enrich the pupils' experiences. A number of activities are organized to ensure that our parents and carers feel part of the school's community.

### Governors

We have a team of hard-working Governors who visit the school to speak to the staff and the pupils. The Governors are a critical friend of the school, willing to challenge and question.

### Our Local Community

We are a Welsh School located near Erddig. We are proud to belong to the city of Wrexham, and as a school we celebrate our rich history. The history and success of the football team are immensely important to our pupils. As a school, we work closely with our community to ensure that our local environment is accessible and an integral part of our curriculum. We provide opportunities and experiences that celebrate the heritage of our local community and national pride, in addition to examining the wider world. We are proud of our culture and heritage here in Wrexham and in Wales, but we also celebrate different cultures.

### Our School Council / Eco Council

We have an active school council and eco council, and both play an important part in the school's decisions and policies. As an award-winning eco and healthy school, we continue to promote health ways of living. Caring for the planet and developing healthy relationships are of the utmost importance to us. Promoting well-being and mental health is central to the work of the eco council.



### Our Parents

We communicate effectively and continually with parents/carers to nurture positive relationships in order to engage them in purposeful and meaningful dialogue. By helping parents/carers to understand how they can use learning both in and outside the school environment, they will be able to support their children outside the school. We have developed and implemented processes which support effective communication by engaging with parents/carers. These processes were developed by considering the use of a wide range of communication methods such as face-to-face, digitally through SeeSaw and e-mail.

### Our Cluster

We work closely with Ysgol Morgan Llwyd Cluster. We will collaborate closely to ensure that there is a learning continuum between the stages, to ensure appropriate progression in the learning and teaching.

### Our Visitors

Visitors enrich the pupils' learning. We invite visitors to the school in order for them to share their experiences with the pupils.

### Our Charities

As a school we support various charities, and the pupils are given opportunities to organise events.

### The Urdd

We collaborate closely with the Urdd to provide pupils with an opportunity to communicate in Welsh, and receive a range of valuable experiences.

This document will be reviewed during the year.

